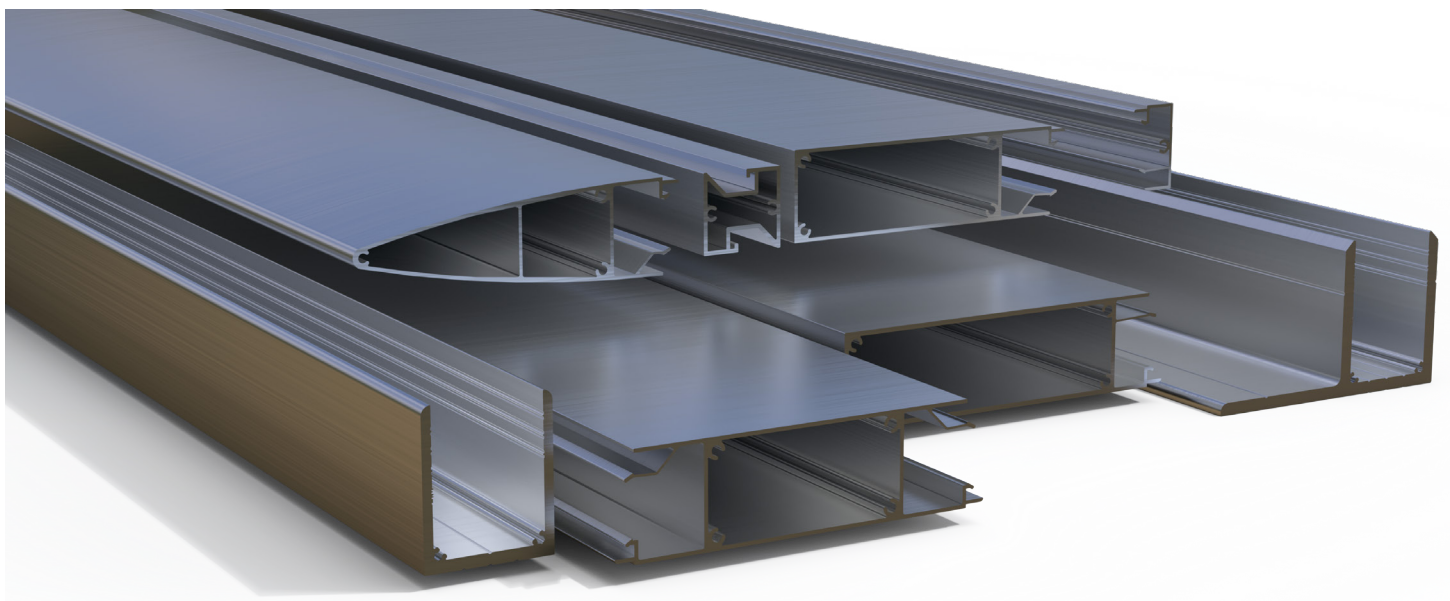
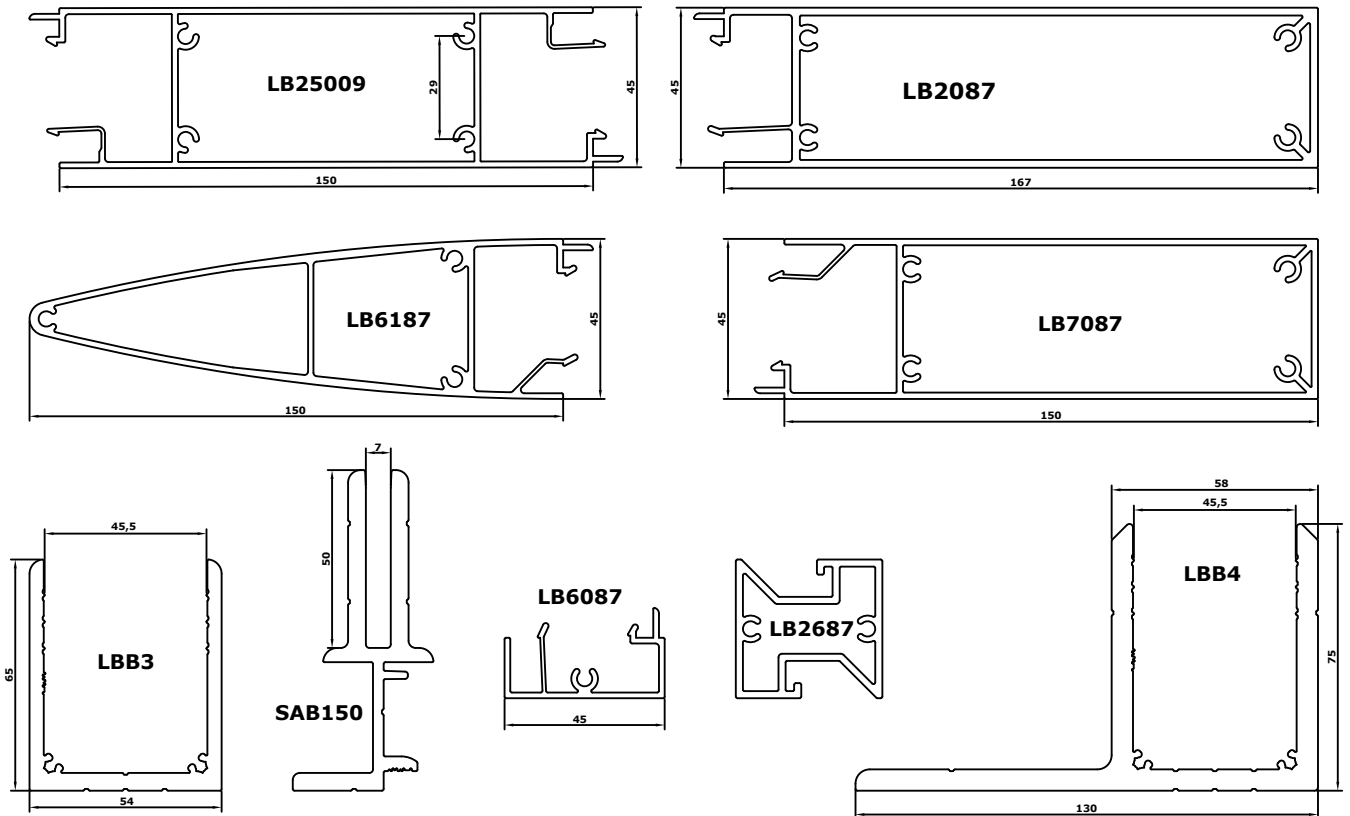
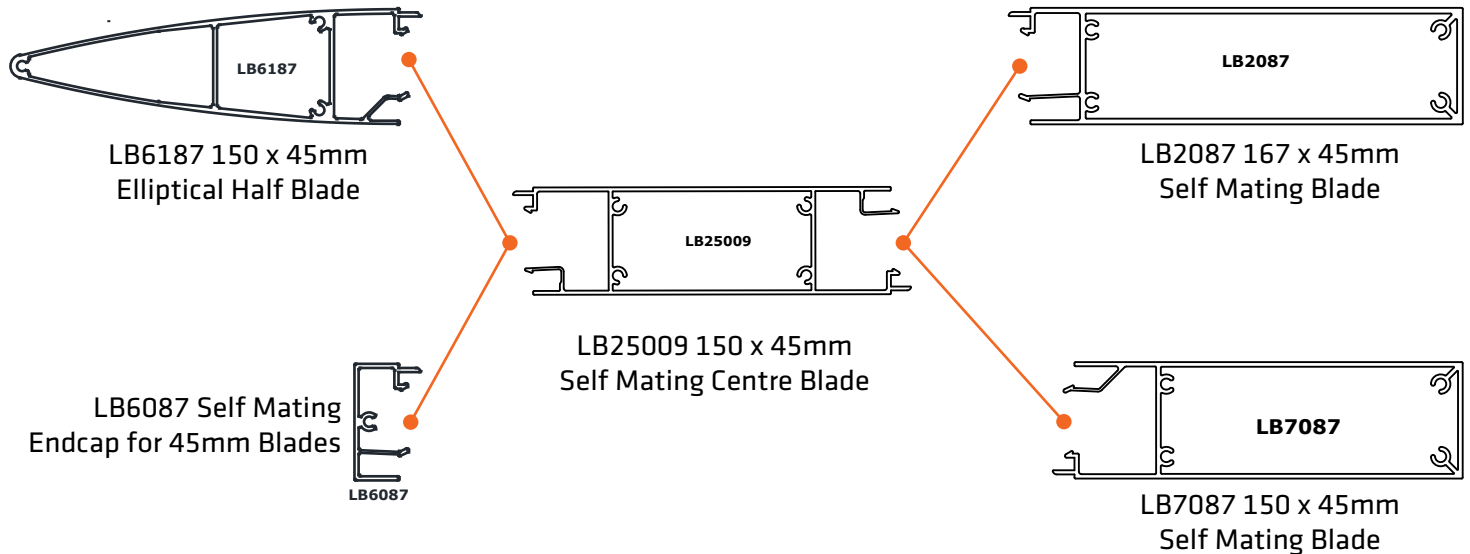


Ezial's Solataire Sun Control extrusions alleviate the radiant heat and glare that comes from modern commercial and industrial glazing. Architects and building designers often specify large glazed openings to capture views and let in as much natural light into people's businesses and offices as they can. This means modern buildings often have a micro climate which is affected by the heat and glare each afternoon. The simplest and easiest way to combat this is to shade your window or facade with sun blades. Well placed sun blades can prevent up to 80% of the heat from entering your building, making your environment more pleasant to be in while also reducing costs and energy spent on climate control.



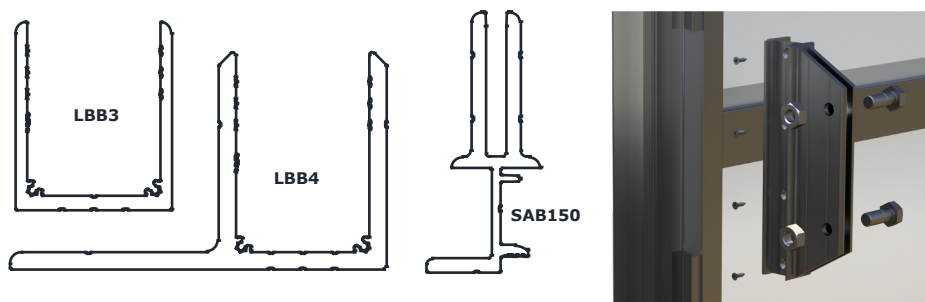
BLADES

Solataire Sun Control extrusions features 5 unique blade profiles that are modular and interchangeable. We have both an elliptical half and a square end cap. We also stock a 2 way mating centre section and 2 sizes of rectangular blades. All blade profiles are self mating. For instance two LB6187 elliptical half blades mated together would make a 300mm full elliptical blade. Likewise, two LB7087 profiles would make a 300mm x 45mm rectangular blade and two LB2087 blades would make a 334mm x 45mm Rectangular Blade.



BRACKETS

Solataire Sun Control extrusions use 3 types of brackets. These are LBB3, LBB4 and SAB150. LBB3 and LBB4 are extruded aluminium brackets that come standard in 6.5m lengths which can easily be cut to size. SAB150 is a machined aluminium bracket that interfaces with Ezial's Commerce Front Glazed System.



SAB150 must be fabricated into the mullions prior to installation. This allows attachment directly off the mullions through 2 purpose built holes.

SPLICE

As an option, Solataire Sun Control can also be spliced together to prevent the clip fits from separating under extreme conditions and to help strengthen the join between 2 inline sun blades of the same profile. Please note: LB2687 is only compatible with LB6187 and LB7087 or configurations of those sections.

